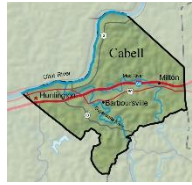


CABELL COUNTY RESPONSE STRATEGIES



Early Intervention and Prevention

Expand Prevention/Early Intervention Services and Programs

- Develop a sustainability plan for QRT
- Review Shield comprehensive prevention program and successful implementation
- Develop best practice or “golden standard” coping skills
- Identify resources for evidence-based programs
- Continue education on Naloxone (knowing the difference, what’s coming)
- Expand the coalition partnership to include school representatives

Treatment

Expand Access to Prevention/Treatment

- Develop a relationship with HELP4WV to create a process to ensure after-hour rapid access into treatment
- Develop a relationship with the Huntington Housing Authority to help with placements
- Develop a new model to treat the family/children (OH model)
- Increase federal funding
- Re-establish the *Handle with Care* program
- Work with the WV Council of Churches on policy changes to address barriers related to felonies
- Partner with WV Cares on waivers

Recovery Supports

Increase Recovery Support Services

- Explore Medicaid billing for peer recovery coaches
- Address family supports needed
- Expand peer recovery coaches into numerous areas (fast food restaurants etc.)
- Expand transitional programs to include women with children and families
- Implement new WVARR standards for houses/programs for consistency once developed
- Explore a partnership with Habitat for Humanity for housing

Address Transportation Barriers

- Partner with KYOVA on a county-wide transportation plan
- Address liability issues with insurance coverage for volunteer transports
- Develop a relay network of transportation with church vans
- Establish treatment program discharge protocols